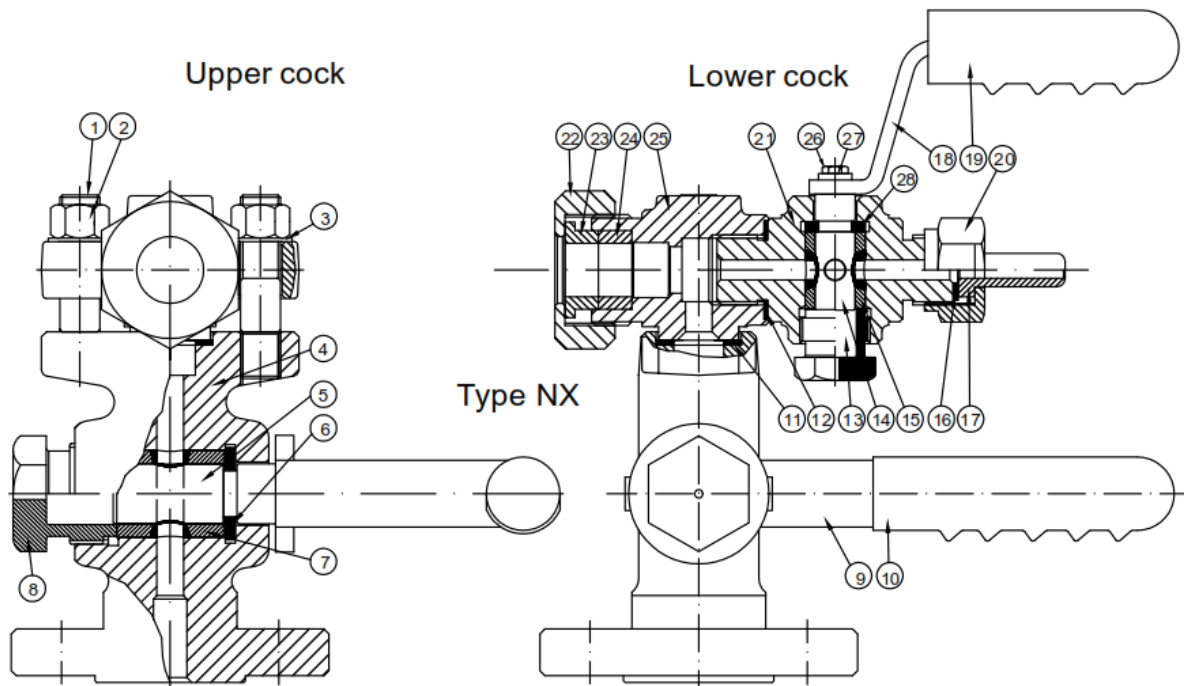


LEVEL GAUGE COCK



N°	Description	Materials	Materials
1	Bolt	B7	B8
2	Nut	2 H	G r 8
3	Washer	UNI 6592	S.steel
4	Body	A10 5N	F316L
5	Plug F18	A316	A316
6	Ring F18	A316	A316
7	Packing sleeve s F1 8	Graphite	Graphite
8	Stuffing box F18	C.steel	S.steel
9	Big cock handle	C.steel	C.steel
10	Big cover handle	Nylon 66	Nylon 66
11	Spirometallic	F 316 / Graphite	F 316 / Graphite
12	Ring thickness	A316	A316
13	Stuffing box F 12	C.steel	S.steel
14	Plug F12	A316	A316
15	Packing sleeve s F12	Graphite	Graphite
16	Gasket	Graphite	Graphite
17	Connedion pipe	C.steel	S.steel
18	Little cock handle	C.steel	C.steel
19	Little cover handle	Nylon 66	Nylon 66
20	Drain cock cover	C.steel	S.steel
21	Drain cock	A10 5N	F 316
22	Connections cover	C.steel	S.steel
23	Stuffing box ring	C.steel	S.steel
24	Packing sleeves F16	Graphite	Graphite
25	Stuffing box body	A10 5N	F 316
26	Cap screw	UNI 5739	UNI 5739
27	Washer	UNI 6592	UNI 6592
28	Ring F12	A316	A316

Connection type NX = by end tube and stuffing boxes

Vessel connection:
 Integral flanges UNI / DIN PN 10-16 - 2540 (DN15 > DN 50)
 Integral flanges ANSI 150RF / 300RF / 600RF-RJ / ANSI 900-1500RF-RJ (DN1/2" > DN 2")
 Screwed as NPT / BSP(Male- Female)
 Socked weld

Optional
 Packing sleeves PTFE
 Safety ball release Ns. Fig.31 (in case of glass breaking)



LKS WEST INSTRUMENTS SDN BHD

No.50-2,Jln Sg. Rasau D32/D, Berjaya Park, Seksyen 32, 40460, Shah Alam, Selangor, Malaysia.

Tel: 603-5525 5038 Fax: 603-5525 5037 mail: info@lkssb.com.my Web page: www.lkssb.com.my