



LIQUID LEVEL INDICATOR

Table and Contents

Measuring principle..... 1

Feature..... 1

Benefit..... 1

Application..... 1

Material..... 2

Drawing..... 2

Customer Reference..... 3

Measuring Principle

Operation of this indicator by means of a float which moves up and down on top of the liquid inside the tank. The float is stabilized on each side by guide wires fixed to the tank base by a bracket and tensioned at the tank roof by means of special spring anchors. A cable is connected to the float, which runs through an exit pipe on top of the tank and is directed by means of special 'sheave elbows' to the indicator on the gauge board. The standard scale on the gauge board is marked off in either meters or feet with black polythene numerals on a white background (volumetric graduations are available as an option). The standard sheave elbow is cast aluminium, housing a pulley wheel, which ensures smooth operation of the indicator.

The gauge board is mounted on brackets, which can be bolted or welded to the side of the tanks. The reading of the indicator denotes the tank liquid level.



Feature

- Ruler type
- Hot-dipped galvanize material suitable for outdoor use.
- Custom make according to user preference

Benefit

- Easy and quick installation
- Mechanical operated, less maintenance

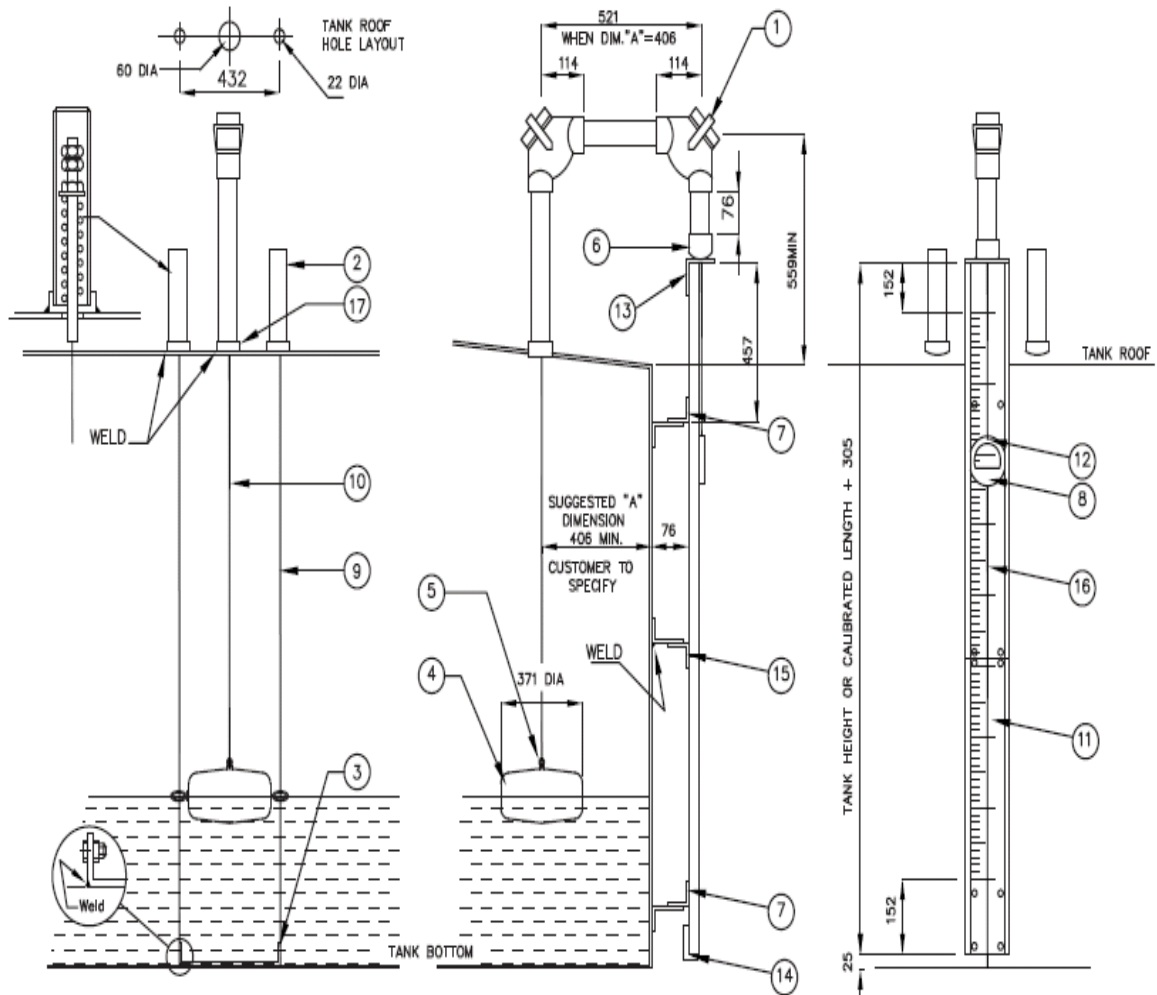
Application

- Suction tank
 - Water tank
 - Diesel tank
 - Storage tank
-

Material

ITEM	DESCRIPTION	STD.MATERIALS
1	90° SHEAVE ELBOW	ALUM.HOUSING/ST.ST.TRIM
2	TOP GUIDEWIRE ANCHOR	STEEL
3	BOTTOM ANCHORAGE	STEEL
4	FLOAT	ST.STEEL
5	CABLE/FLOAT CONNECTION	ST.STEEL
6	TOP GAUGEBOARD CONNECTION	MALL.IRON & BRASS
7	TOP & BOT. GAUGEBOARD BRKTS	M.STEEL
8	INDICATOR & PULL CHAIN CONN	CAST IRON & BRASS
9	FLOAT GUIDEWIRE	ST.STEEL

ITEM	DESCRIPTION	STD.MATERIALS
10	FLOAT CABLE	ST.STEEL
11	GAUGEBOARD	EXTRUDED ALUM.
12	CABLE CLAMP	ST.STEEL
13	TOP GAUGEBOARD ANGLE	M.STEEL
14	BOTTOM GAUGEBOARD ANGLE	M.STEEL
15	GAUGEBOARD JOINT BRKT.	M.STEEL
16	CHAIN	BRASS
17	1-1/2" API HALF COUPLING	M.STEEL



***subject to change without notice on design & material.



Plus



Prosper



Shangri la Maldives



Shell



Sime Darby



Syabas



Tabung Haji



Taliworks



Wilmar



Aeon



Apex Uniparts



Felcra



Felda



Genting



IOI Group



Jusco



KL Kepong



Mid Valley



MPOB



Panasonic

Distributor:

LKS West Instruments Sdn Bhd^(834286-T)
 No. 50-2, Jalan Sungai Rasau D32/D,
 Berjaya Park, Seksyen 32, Shah Alam
 40460, Selangor, Malaysia
 Tel: +603-5525 5038
 Fax: +603-5525 5037
 Email: info.west@lkssb.com.my