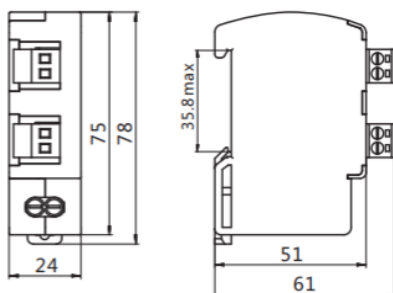


LP-C/TER

Measuring Principle

Lightning Protector Unit model LP-C/TER signal lightning arresters are suitable for lightning protection of control signals and twisted-pair data lines, which can prevent various dialing equipment from permanent damage or transient interruption arising from inductive overvoltage, over current and other transient surge voltage caused by surge and industrial noise, etc.



Feature

- Adopt 35mm standard DIN rail, convenient for installation.
- Multi-protection technology, strong protection and high reliability
- Built-in 4mm lifting grounding terminal, strong wiring capability and more reliable grounding
- Compact and exquisite, flexible, convenient and adaptable

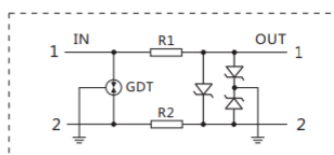
Application

- 4-20mA control signal
- Twisted -pair data line (RS232,RS422,RS485)

Main Technical Data

Model	LP-C/TER-5	LP-C/TER-12	LP-C/TER-24	LP-C/TER-48
Rated operating voltage Ue	5V	12V	24V	48V
Max. continuous operating voltage Uc	8V	18V	30V	60V
Voltage protection level (Up @line-line)	<80V	<80V	<80V	<150V
Voltage protection level (Up @line-GND/PE)	<100V	<100V	<100V	<200V
Wire to line nominal discharge current (In @8/20μs)	5kA			
Line to ground nominal discharge current (In @8/20μs)	5kA			
Connection method	BNC			
Transmission rate fg	16MHz			
Insertion loss	≤0.5dB			
Housing Material	Flame-retardant Reinforced Nylon (UL 94V-0)			
Installation method	35mm standard rail mounting			
Recommended grounding conductor cross-sectional area	3mm ² multi-strand soft wire			
Normal operating temperature	-40°C ~ 80°C			

Wiring Diagram



LKS West Instruments Sdn Bhd (834286-T)

No. 50-2, Jalan Sungai Rasau D32/D, Berjaya Park, Seksyen 32, 40460, Shah Alam, Selangor, Malaysia.

Tel: +603-5525 5038 Fax: +603-5525 5037 Email: info.west@lkssb.com.my Webpage: www.lkssb.com.my