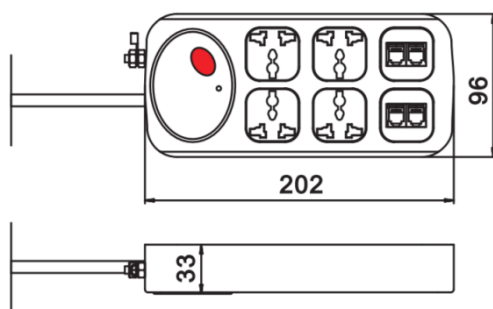


LP-CZ/06

Measuring Principle

Lightning Protector Unit model LP-CZ/06 socket type integrated lightning protection device has power supply and signal lightning protection function, wherein the power supply part is suitable for AC 250V and below, and the rated current does not exceed 10A front end of various terminal electrical equipment; signal part can be freely combined with signal lightning protection module, installed in the front end of computer network, telephone, control line and other information equipment, the product can simultaneously strike or operate the power line and signal line The resulting overvoltage is protected.



Feature

- Large flow rate and low residual voltage
- Standard multi-function socket design, easy to install and use
- Multi-protection technology, strong protection and high reliability
- Built-in thermal fuse, safe and reliable
- Red lightning protection indicator light is on, indicating lightning protection is normal, and the extinction means lightning protection failure.

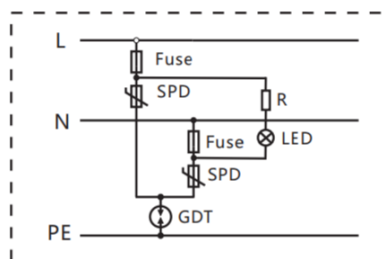
Application

- Power supply
- RJ11, RJ45, BNC, RS485, TV

Main Technical Data

Model	LP-CZ/06
Rated working voltage U_n V	220
Max. continuous operating voltage U_c V	320
Voltage protection level U_p V	<1.5
Rated working current I_e A	10
Nominal discharge current I_n (8/20 μ s) kA	10
Max. discharge current I_{max} (8/20 μ s) kA	20
Connection mode	Standard GB three position socket
Response time nS	<25
Enclosure material	Enhanced flame retardant nylon (flame retardancy: V0)
Method of installation	35mm standard DIN rail installation
Cross sectional area	$\geq 2.5\text{mm}^2$ stranded/flexible

Wiring Diagram



LKS West Instruments Sdn Bhd (834286-T)

No. 50-2, Jalan Sungai Rasau D32/D, Berjaya Park, Seksyen 32, 40460, Shah Alam, Selangor, Malaysia.

Tel: +603-5525 5038 Fax: +603-5525 5037 Email: info.west@lksb.com.my Webpage: www.lksb.com.my