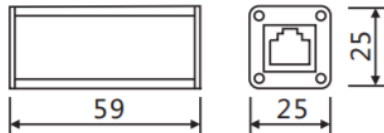


LP-C/RJ11/L

Measuring Principle

Lightning Protector Unit model LP-C/RJ11/L is aluminum shell RJ11 signal lightning protection device. It mainly prevents the damage caused by the induced overvoltage or other instantaneous surge voltage generated by lightning or industrial noise to the above system or equipment.



Feature

- Aluminum profile shell, beautiful and durable, good shielding effect
- Standard signal connector, easy to use, reliable connection
- Multi-level fine protection circuit, using the latest high-speed surge protection device, reflecting fast Low output residual voltage and superior transmission performance

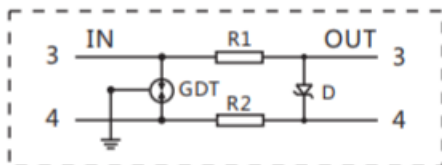
Application

- Telephone/Fax
- Program controlled computer room
- Control system

Main Technical Data

Model	LP-C/RJ11/L
Rated operating voltage U_e	110V
Max. continuous operating voltage U_c	130V
Nominal discharge current (I_n @8/20 μ s)	2.5kA
Voltage protection level (U_p @line-line)	<80V
Voltage protection level (U_p @line-GND/PE)	<750V
Transmission rate f_g	40MHz
Protection line	3,4 lines
Insertion loss	≤ 0.5 dB
Line to line response time T_a	≤ 1 ns
Line to ground response time T_a	≤ 100 ns
Normal operating temperature	-40°C ~ 80°C

Wiring Diagram



LKS West Instruments Sdn Bhd (834286-T)

No. 50-2, Jalan Sungai Rasau D32/D, Berjaya Park, Seksyen 32, 40460, Shah Alam, Selangor, Malaysia.

Tel: +603-5525 5038 Fax: +603-5525 5037 Email: info.west@lkssb.com.my Webpage: www.lkssb.com.my