

## Reflex U Bolt Level Gauge

### Measuring Principle

The principle of reflex level gauge is based on the difference in the refractive indices of liquid and vapor. The gauge glass has prismatic right-angled grooves on the side facing the liquid. The level is indicated as a result of the light refraction principle. The liquid filled area completely absorbs the rays of light and appears dark; while the rays of light are totally reflected in the gas/air filled area which appears bright.



---

### Feature

- Single reflex glass level gauge
- U-bolt type body
- Pressure rating PN64
- Flanges standard = DN20/PN40 or DN20/ANSI 300
- Glass standard type B = size 34mm

---

### Benefic

- Easy level reading
- Low operating cost
- Assured level indication without power supply

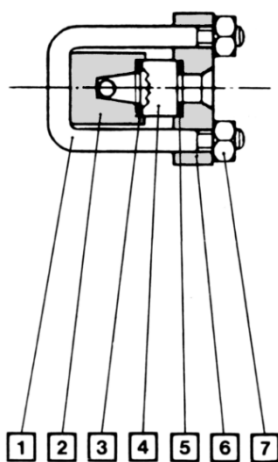
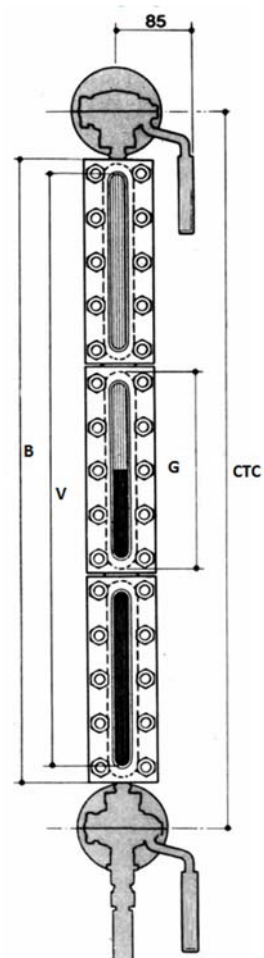
---

### Application

- Boiler
  - Surge vessel/Deaerator
  - Process and power plant
  - Chemical Industries
  - Food & Beverage Industries
-

## Model Dimension

Model	Min CTC	B	V(+2/0)	G
13	285	178	141	165
14	310	203	166	190
15	340	233	196	220
16	370	263	226	250
17	400	293	256	280
18	440	333	296	320
19	460	353	313	340
24	515	406	367	190
25	575	466	427	220
26	635	526	489	250
27	695	586	549	280
28	775	666	628	320
29	815	706	668	340
36	900	789	751	250
37	990	879	841	280
38	1110	999	961	320
39	1170	1059	1021	340
47	1285	1172	1134	280
48	1445	1332	1294	320
49	1525	1412	1374	340
57	1580	1465	1427	280
58	1780	1665	1627	320
59	1880	1765	1727	340
68	2115	1998	1960	320
69	2235	2118	2080	340
79	2590	2471	2433	340



## Material

1. Bolt	B7
2. Body	Carbon Steel
3. Sealing Gasket	Graphite
4. Glass	Borosilicate DIN 7081
5. Cushion Gasket	Graphite
6. Bonnet	Carbon Steel
7. Nut	2H

### Distributor:

**LKS West Instruments Sdn Bhd** <sup>(834286-T)</sup>

No. 50-2, Jalan Sungai Rasau D32/D, Berjaya Park, Seksyen 32, 40460, Shah Alam, Selangor, Malaysia.

Tel: +603-5525 5038 Fax: +603-5525 5037 Email: [info.west@lkssb.com.my](mailto:info.west@lkssb.com.my) Webpage: [www.lkssb.com.my](http://www.lkssb.com.my)