

## Transparent Level Gauge

### Measuring Principle

Transparent level gauge is fitted with two plate transparent glasses. Fluid level is indicated as the result of the different transparency of the two media. In order to improve visibility under special operating conditions, an illuminator can be mounted on one side of the transparent level gauge.

This type of gauge is used for measuring both total and interface liquid level of fluids in a vessel and also allows the use of Mica shields on the glass for excellent protection in steam service.



---

### Feature

- Double transparent glass level gauge
- Use together with illuminator light for easy viewing
- Pressure rating PN40
- Flanges standard = DN20/PN40 or DN20/ANSI 300
- Glass standard type A = size 30mm (optional type B glass )
- Mica shield protection option available for corrosive or high temperature liquid

---

### Benefic

- Easy level reading
- Low operating cost

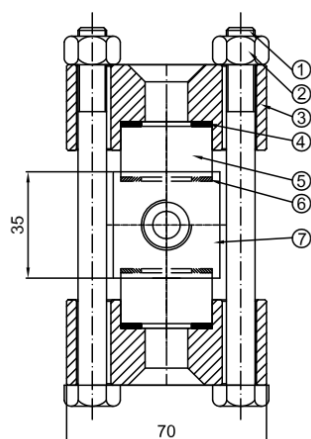
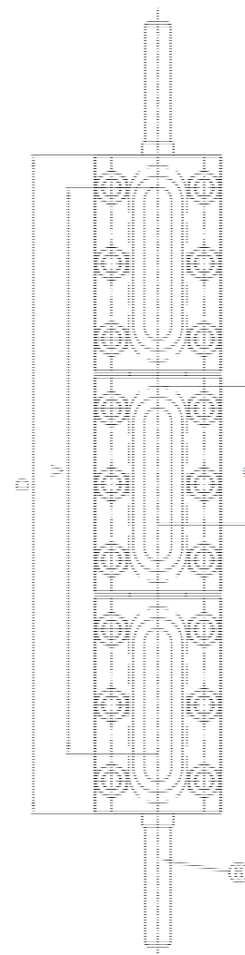
---

### Application

- Boiler
  - Surge vessel/Dearator
  - Process and power plant
  - Chemical Industries
  - Viscous colored and interface liquids.
-

## Model Dimension

Model	Min CTC	D	V(+2/0)	G
13	285	178	141	165
14	310	203	166	190
15	340	233	196	220
16	370	263	226	250
17	400	293	256	280
18	440	333	296	320
19	460	353	313	340
24	515	406	367	190
25	575	466	427	220
26	635	526	489	250
27	695	586	549	280
28	775	666	628	320
29	815	706	668	340
36	900	789	751	250
37	990	879	841	280
38	1110	999	961	320
39	1170	1059	1021	340
47	1285	1172	1134	280
48	1445	1332	1294	320
49	1525	1412	1374	340
57	1580	1465	1427	280
58	1780	1665	1627	320
59	1880	1765	1727	340
68	2115	1998	1960	320
69	2235	2118	2080	340
79	2590	2471	2433	340



## Material

1.	Bolts	Carbon Steel
2.	Nut	Carbon Steel
3.	Cover	Carbon Steel
4.	Upper Gasket	Asbestos
5.	Reflex Glass	Borosilicate
6.	Lower Gasket	Graphite
7.	Level Body	Carbon Steel
8.	Nipples	Carbon Steel

### Distributor:

**LKS West Instruments Sdn Bhd** (834286-T)

No. 50-2, Jalan Sungai Rasau D32/D, Berjaya Park, Seksyen 32, 40460, Shah Alam, Selangor, Malaysia.

Tel: +603-5525 5038 Fax: +603-5525 5037 Email: [info.west@lkssb.com.my](mailto:info.west@lkssb.com.my) Webpage: [www.lkssb.com.my](http://www.lkssb.com.my)